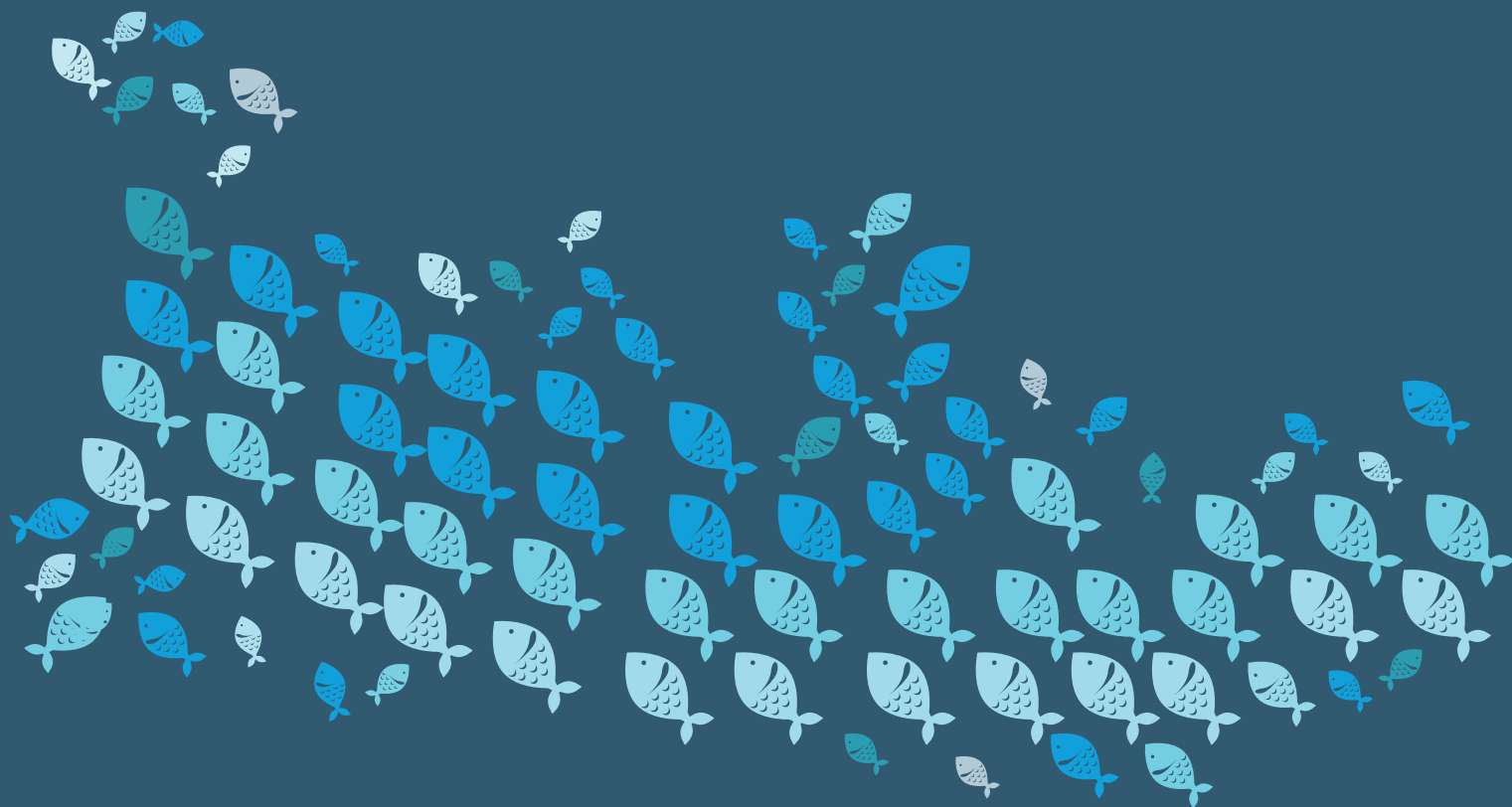
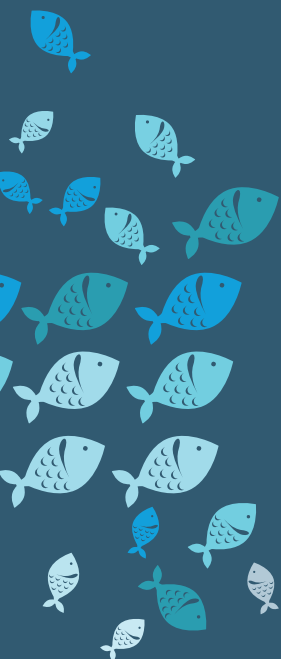




SMART
Seafood Packaging



Index



~ **02**
WHERE WE ARE



~ **03**
COMPANY



~ **04**
QUALITY POLICY



~ **05**
SUSTAINABILITY



~ **06**
WHY POLYPROPYLENE
SEAFOOD PACKAGING
IS A SMART SOLUTION?



~ **08**
POLYPROPYLENE
SEAFOOD BOXES:
UNIQUE FEATURES



~ **09**
PRODUCTS RANGE



~ **10**
ICE BOX



~ **12**
SKY BOX




~ **14**
DRY BOX



~ **16**
PERLA BOX



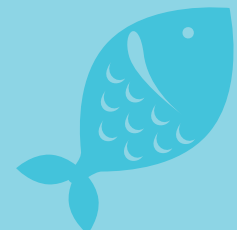
~ **17**
LIVE FISH BOX



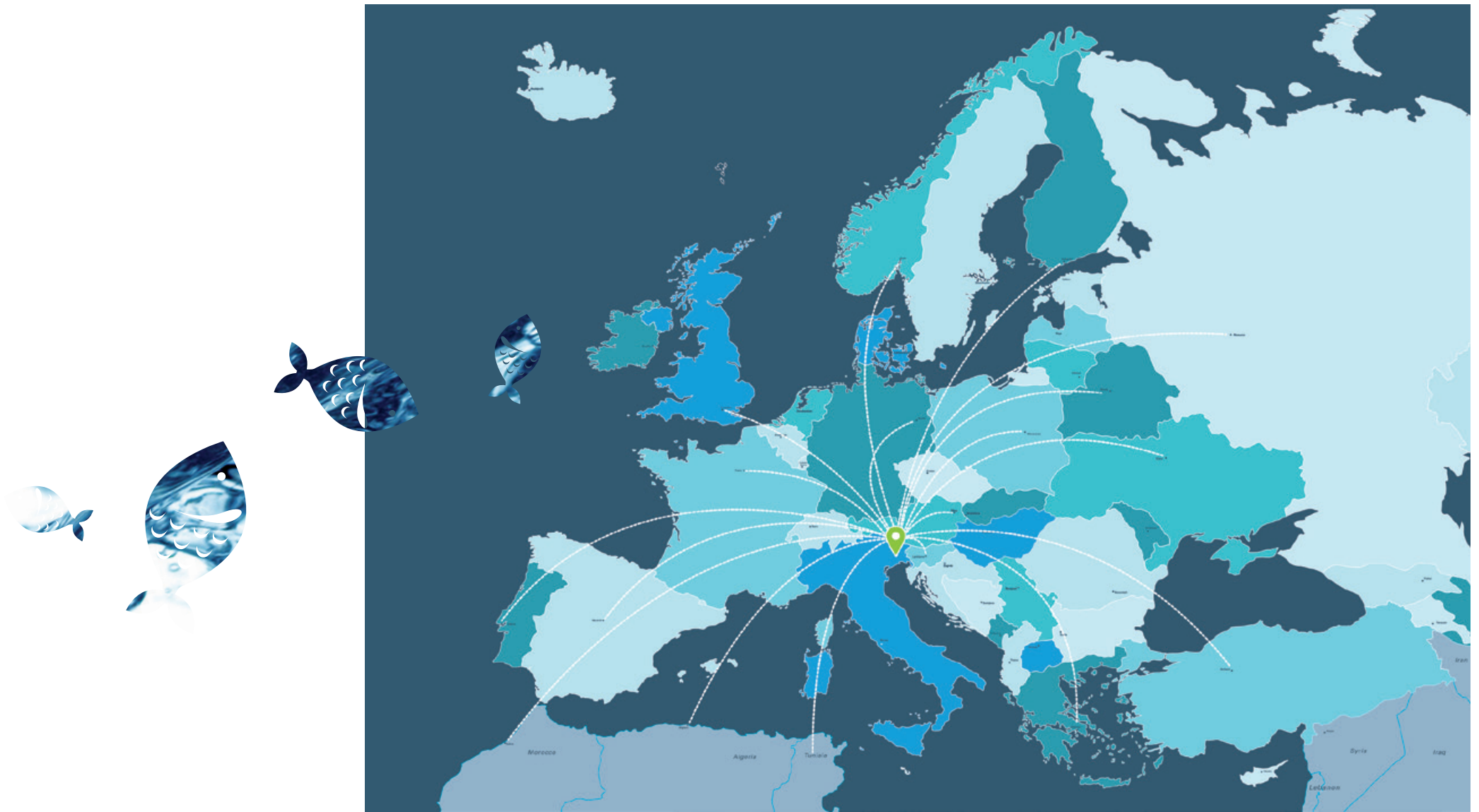
~ **18**
POLYPROPYLENE BOXES
PRODUCT CHART



~ **20**
KARTON'S CONTACTS



Where we are



Conveniently located in North East of Italy, Karton is a leading supplier of polypropylene packaging all over Europe.

Company



Karton S.p.A. is a well-known manufacturer of polypropylene corrugated and solid sheets.

With its headquarters in Northern Italy, Karton has a wide experience in supplying the food and beverage industry.

Lean production, innovative manufacturing technology and **in-house converting** are the key features of our leadership in the polypropylene packaging market since forty years.

Karton produces a wide range of environmentally friendly foodstuffs packaging: from layer pads for bottles and cans, to containers for fresh fruit and vegetables, to meat and seafood boxes.

Quality Policy

~ 04

Quality has always been the inspiring principle in Karton's activities. The company committed to guaranteeing its customers the highest standards in terms of quality and food safety, in an environmentally friendly way.



ISO 9001

ISO 22000

ISO 14001

OHSAS 18001

All awarded by Bureau Veritas

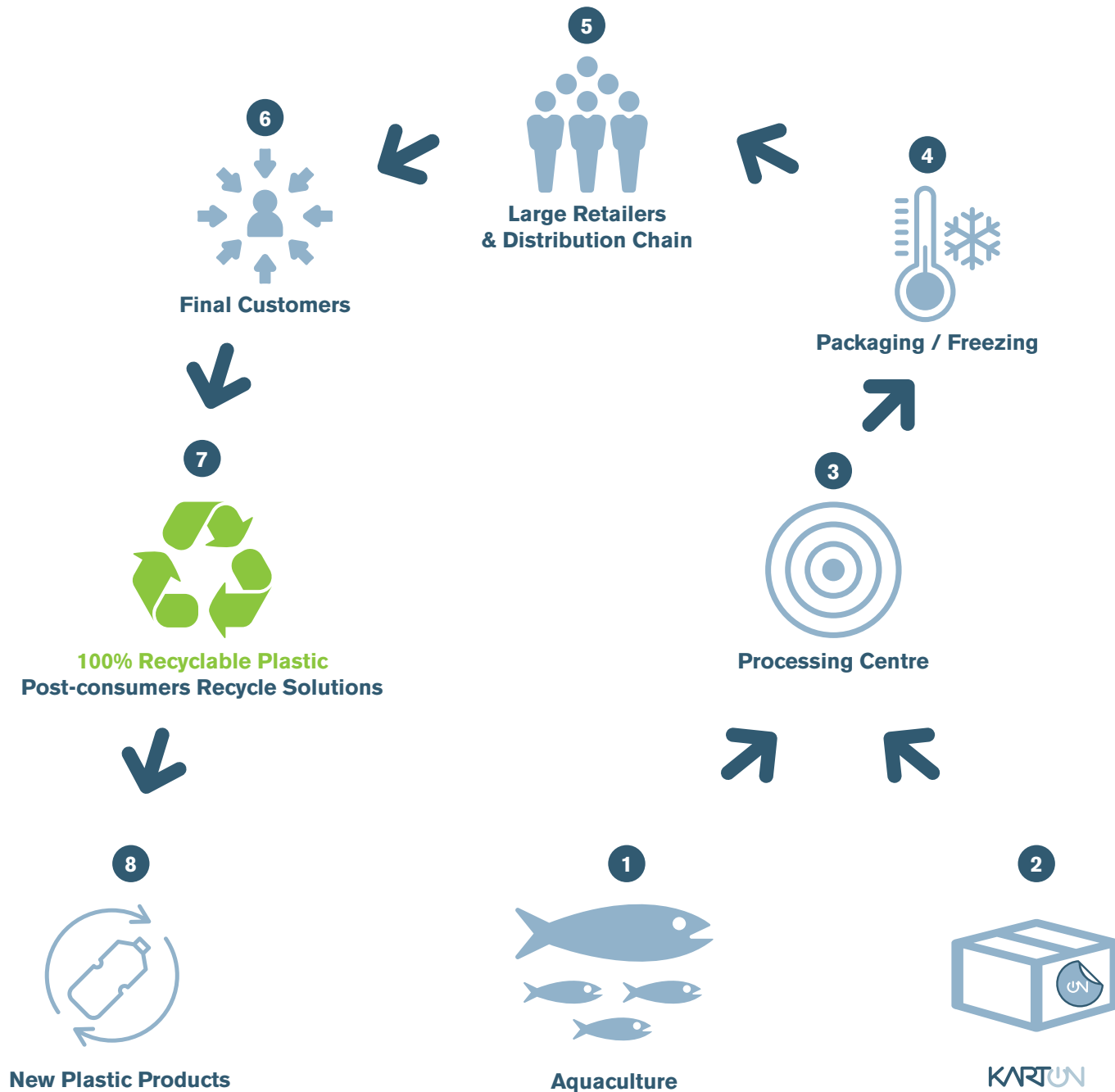


Our seafood boxes are safe and approved for containing foodstuffs: they comply with the **European Food Contact Legislation** (EU NO.10/2011, EC No. 1935/2004, EC No. 2023/2006 and subsequent modifications and additions) as well as with the relevant Italian Legislation (D.M. 21.3.1973 and D.P.R. No. 777/82 and subsequent modifications and additions). Our seafood packaging has been as well successfully tested with relevant food simulants.* Moreover, the flexographic print on seafood boxes is compliant with **EuPIA Guideline on Printing Inks**.

*Food simulants A (10% ethanol) and D2 (vegetable oils). Tests performed and validated by independent laboratories.

Sustainability

05 ~



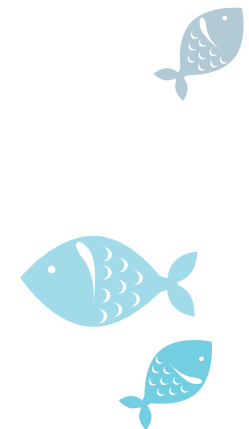
Polypropylene: a recyclable solution

Karton extrudes solid and corrugated sheets in polypropylene, a versatile polyolefin polymer with high mechanical performance, such as durability, waterproof property, resistance to chemicals and bacteria, fibre-free and printable. **Polypropylene is a 100% recyclable material.**

This material ensures the total recyclability at the end of the product life: it can be recycled for new products avoiding its dispersion in the environment.

Polypropylene recycling process is the less impacting type of disposal, when compared with incineration or landfill disposal.

We are continuously searching product solutions with low environmental impact: recycling and reusing philosophy is part of the ethic of Karton's work.



Why polypropylene seafood packaging is a smart solution?

Innovation

We produce **bespoke boxes**: designed to meet your exact size and performance requirements. Watertight when your products need to reach their destination without leakage; or non-leak proof to release unwanted ice melting during transportation; or designed with locking tabs to improve stacking stability.

An innovative, **green alternative to expanded polystyrene (EPS)**, which ends up in landfills, and a winning solution for customers willing to lower their environmental impact.

Brand

Our seafood boxes will help you to **highlight your logo with bright graphics**.

We are equipped with in-house die cutting, gluing and printing facilities perfect for promoting your brand at its best.

We print seafood packaging with water-based inks, compliant with EuPIA guidelines.

No limits for your branding!



Logistics

Our polypropylene (PP) seafood boxes are shipped flat in pre-folded bundles, to **minimise transport costs and maximise storage space in your warehouse.**

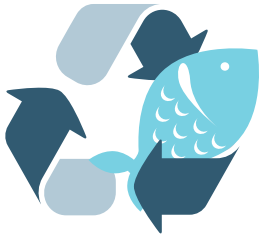
Designed for manual easy folding, they can be assembled **just-in-time** at your facilities.

Moreover, when PP boxes are filled with seafood, they have similar inner size and capacity compared with EPS, but considerably smaller outer dimensions: that is to say, you will optimise the total weight of seafood content on each pallet, saving on freight costs.

07 ~

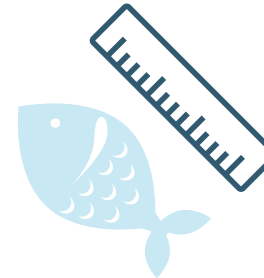


Polypropylene seafood boxes: unique features



~ 100% recyclable boxes, sustainable alternative to expanded polystyrene (EPS)

~ Customised sizes and features according to your marketing requirements



~ High quality print to promote your Brand



















~ Optimal hygiene and food safety guaranteed: our production process complies with ISO 22000 standards



~ Reduce freight costs as boxes are delivered flat and optimise handling operations like stacking, assembling and shipping

Products Range



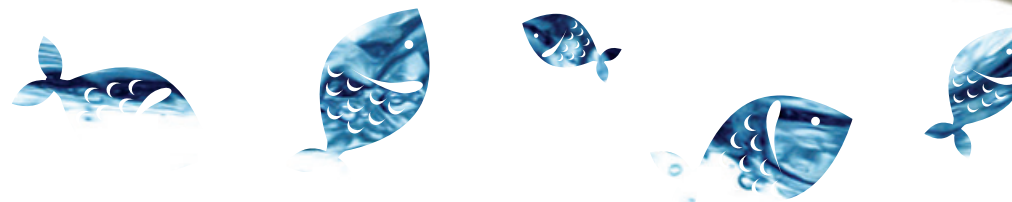
BOXES MAIN FEATURES MATRIX*		ICE BOX			SKY BOX			DRY BOX		PERLA BOX**	LIVE FISH BOX
		Ice Box 1	Ice Box 2	Ice Box 3	Sky Box 1	Sky Box 2	Sky Box 3	Dry Box 1	Dry Box 2		
FEATURES	Leak proof										
	Stackable										
	Drainage holes design										

09 ~

Additional notes:

* Boxes dimensions can be custom made. For standard and best seller sizes, please refer to final chart.

** All features are available upon customer's requests.



❄ Ice Box

Ice boxes main features:

LEAK PROOF;

EASY TO ASSEMBLE;

✈ → BEST SELLER BOXES FOR AIR SHIPMENT.



Ice Box 1



Stackable option



Ice Box 2



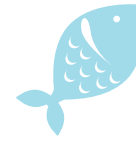
Sealed edges option
for highest hygiene



Ice Box 3



Pop-up construction
One-piece only



Sky Box

Sky boxes main features:

STACKABLE DESIGN;

DRAINAGE HOLES TO RELEASE LIQUIDS;

DURABLE AND STRONG CONSTRUCTION.



Sky Box 1



Sky Box 2



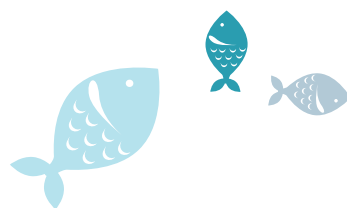
Reinforced and pre-assembled corners

Sky Box 3



Shipped flat + mountable construction





13 ~

Transparent polypropylene lid option available

Dry Box



Dry boxes main features:

DRAINAGE HOLES DESIGN;

POP-UP AND FAST CONSTRUCTION;

BEST SELLER OPTION FOR SEAFOOD
INTERNATIONAL TRANSPORTATION.

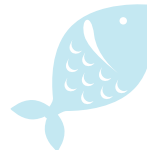
Dry Box 1

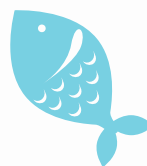


Dry Box 2



Stackable option





Perla boxes main features:

SPECIFICALLY DESIGNED FOR OYSTERS, VERY HYGIENIC;

LEAK PROOF OPTION AVAILABLE;

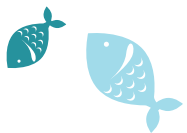
POP-UP CONSTRUCTION, ONE PIECE ONLY.



Double opening option



Single lid option



Live Fish Box

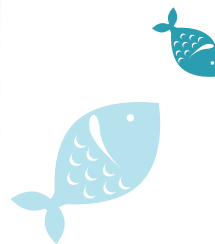
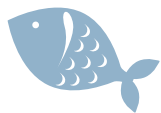
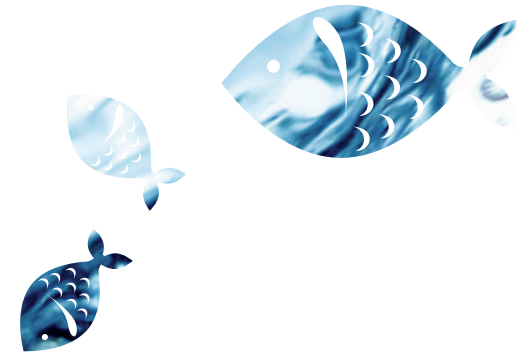


Live Fish box main features:

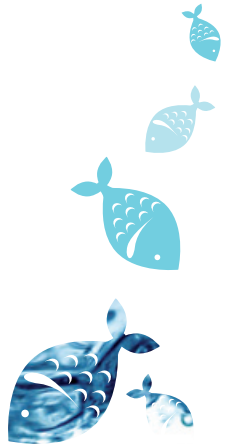
DESIGNED FOR **LIVE** SHELLFISH;

USER FRIENDLY: EASILY ASSEMBLED;

OPTIONAL DIVIDERS BASED ON SPECIFIC SHELLFISH - CUSTOMISABLE SIZE.



Polypropylene boxes product chart



POLYPROPYLENE (PP) BOXES*		
Ice Box Leak Proof models	Dimensions (mm)	Volume (L)
3 kg	400x300x100	10
5 kg	400x300x120	12
8 kg	400x300x150	15
10 kg	500x400x120	20,5
15 kg	600x400x150	31,5
Sky Box Stackable models	Dimensions (mm)	Volume (L)
3 kg	400x300x100	10
5 kg	400x300x120	12,5
8 kg	400x300x150	15,5
10 kg	500x400x120	21
15 kg	600x400x150	32
Dry Box Drainage Holes models	Dimensions (mm)	Volume (L)
3 kg	400x300x100	10,5
5 kg	400x300x120	12,5
8 kg	400x300x150	16
10 kg	500x400x120	21,5
15 kg	600x400x150	32,5



Leak Proof design



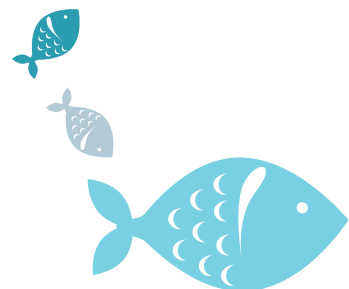
Stackable design

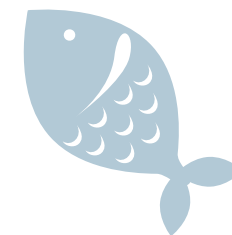


Drainage holes design

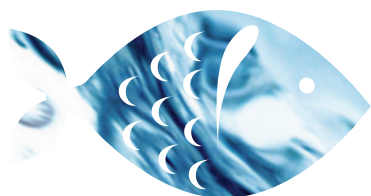


* The above information is provided with the sole purpose to describe our articles.
Shapes and volumes may be modified upon customer's request. We suggest as a good practise to always validate a sample test in the real condition of usage.





SUGGESTED PALLET CONFIGURATION (filled boxes) PALLET HEIGHT 1250 mm		
PP box size (external dimensions)	Europallet (1200x800 mm)	Industrial pallet (1200x1000 mm)
400x300x100 mm (3 kg)	8x boxes = 1 layer 11x layers = 1 pallet total 88 boxes	10x boxes = 1 layer 11x layers = 1 pallet total 110 boxes
400x300x120 mm (5 kg)	8x boxes = 1 layer 9x layers = 1 pallet total 72 boxes	10x boxes = 1 layer 9x layers = 1 pallet total 90 boxes
400x300x150 mm (8 kg)	8x boxes = 1 layer 7x layers = 1 pallet total 56 boxest	10x boxes = 1 layer 7x layers = 1 pallet total 70 boxes
500x400x120 mm (10 kg)	4x boxes = 1 layer 9x layers = 1 pallet total 36 boxes	6x boxes = 1 layer 9x layers = 1 pallet total 54 boxes
600x400x150 mm (15 kg)	4x boxes = 1 layer 7x layers = 1 pallet total 28 boxes	5x boxes = 1 layer 7x layers = 1 pallet total 35 boxes
Comparison of Europallet configuration EPS vs PP	EPS box 3 Kg 400x300x120 mm (external dimensions)	PP box 3 kg 400x300x100 mm (external dimensions)
Filled boxes pallet height 1200 mm	8x boxes = 1 layer 9x layers = 1 pallet total 72 boxes	8x boxes = 1 layer 11x layers = 1 pallet * total 88 boxes
Empty boxes pallet height 2400 mm	8x boxes = 1 layer 18x layers = 1 pallet total 144 boxes	Flat packed boxes: ** total 700 boxes
* increased internal volume available ** 5 times more flat PP boxes per pallet than EPS boxes!		



Karton's contacts



Innovative, solid and customer-oriented, Karton is the ideal partner to satisfy your need for reliable packaging.
Our smart seafood packaging is the effective solution to save freight costs and to support elimination of non-recyclable packaging materials.

Contact us!

Sales & Customer Service:
info@karton.it

Marketing:
marketing@karton.it

T. +39 0434 788811
F. +39 0434 788822
www.karton.it







Karton S.p.A.

Viale Europa, 7 ~ 33077 Sacile (Pn) ~ Italy
T. +39 0434 788811 ~ F. +39 0434 788822
info@karton.it ~ www.karton.it