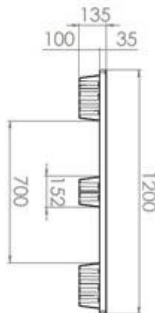
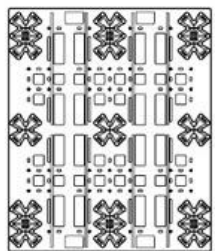
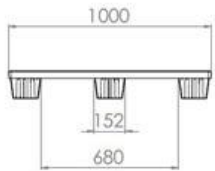
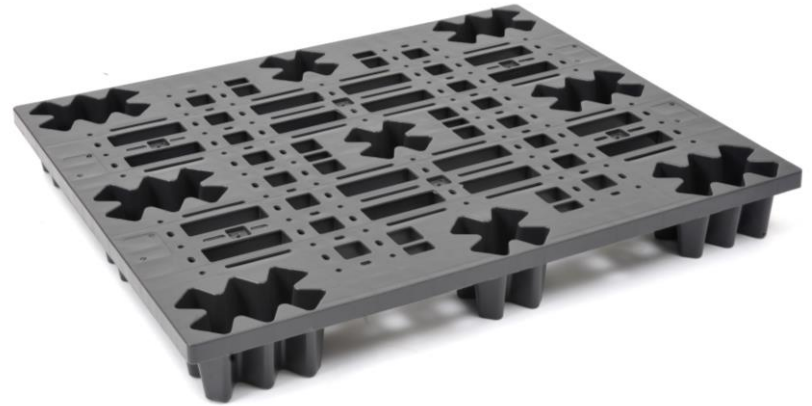


# ST1210 Nestable Pallet

Sturdy and easy to clean, ST1210 nestable pallets are a functional solution to safely transport and storage products.

Once empty, these pallets nest for a cost-efficient return trip and for warehouse storage. 3 runners available as additional feature, as well as external rim.

Standard colour is black, different colours upon request.



Dimensions in mm (L x W x H)	1200 x 1000 x 130 (151 with runners)
Height in mm	134 (151 with runners)
Pallet entry height in mm	100 (117 with runners)
Height topdeck in mm	34
Weight in kg	10,8
Dynamic loading* in kg	800 *upon type of loading
Static loading in kg	2000
Nestable	Yes (without runners)
No. of pallets per stack	50 / 56
Height of stack of pallets mm	2300 / 2500
Stacking weight in kg	540 / 604,8
No. of pallets per truck load	1300 (1456 without runners)
No. of pallets per 20' container	432 (without runners)
No. of pallets per 40' HC container	1210 (without runners)
Temperature Stability	-20°C to +60°C
Further options available	External rim (no extra costs) 3 runners (additional feature)
Material	Polypropylene



External rim



3 Runners kit